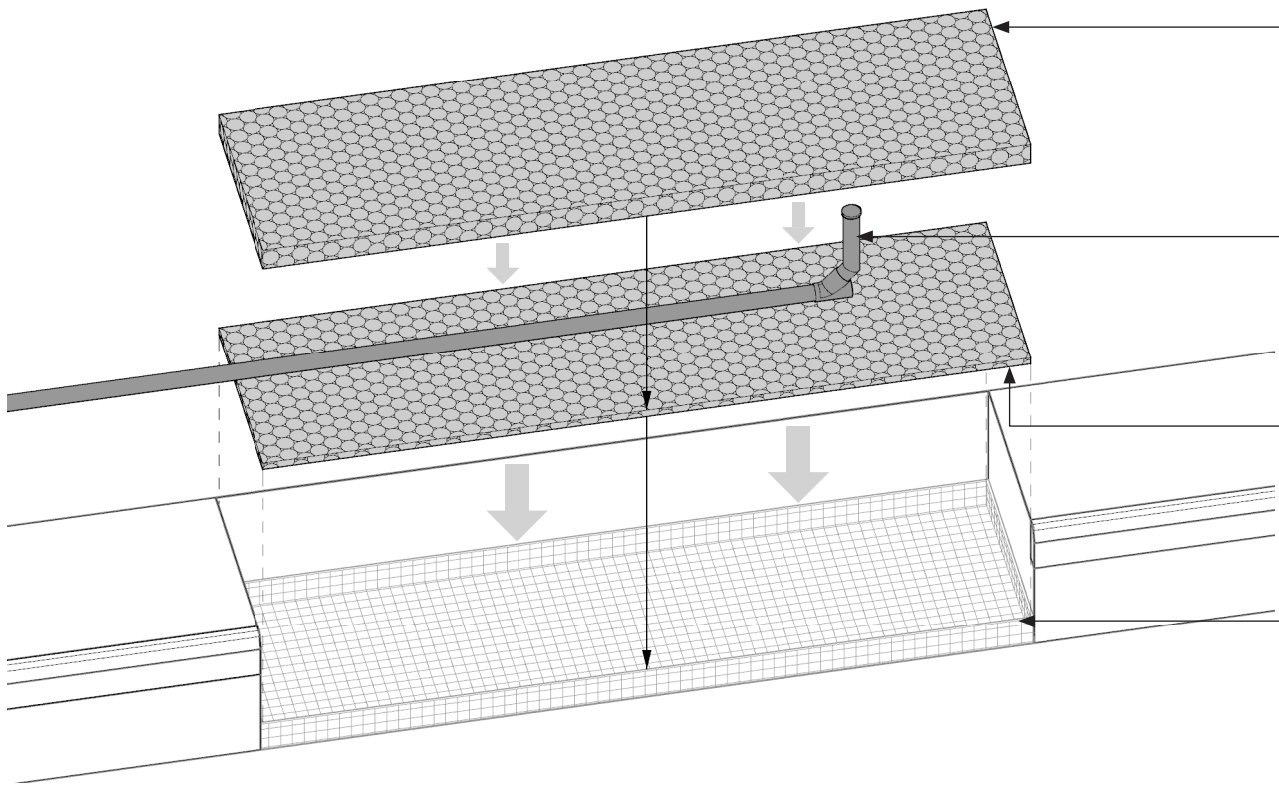


OPTION A

STEP 1.2

PLACE OPEN-GRADED DRAINAGE AGGREGATE AS SPECIFIED BY DESIGNER OF RECORD. SET TOP ELEVATION OF AGGREGATE BASE LAYER TO 3' BELOW ADJACENT GUTTER ELEVATION. FOLLOW SLOPE OF CURB ALONG LENGTH OF THE PLANTER.



OPTION B (WITH UNDERDRAIN PIPE)

STEP 1.2.3

PLACE REMAINDER OF DRAINAGE AGGREGATE UP TO TOP OF DRAINAGE LAYER. VIBRATE AGGREGATE INTO PLACE WITH PLATE COMPACTOR OR OTHER VIBRATORY METHOD

STEP 1.2.2

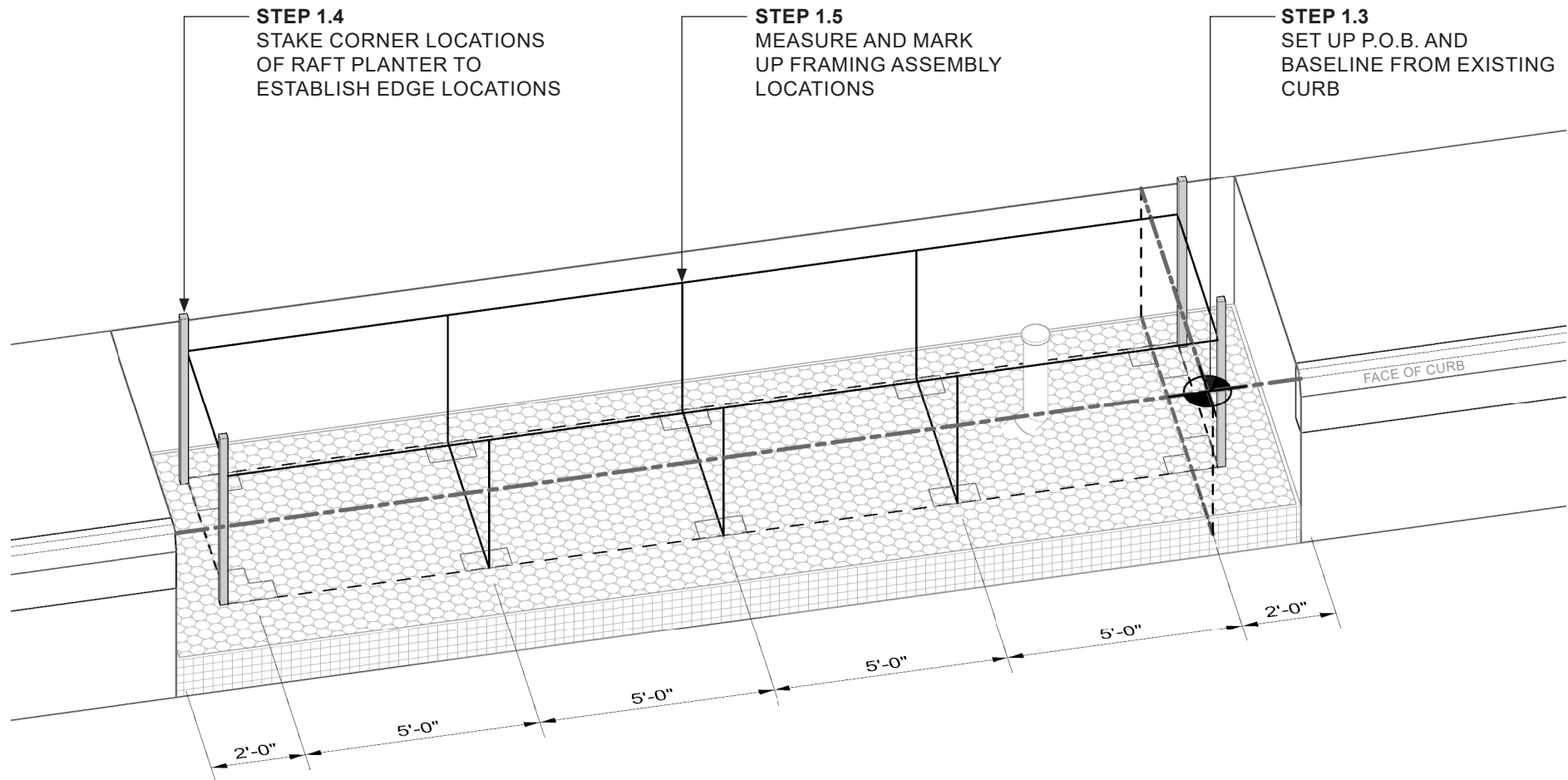
PLACE UNDERDRAIN PIPE, AS SIZED AND SPECIFIED BY DESIGNER OF RECORD

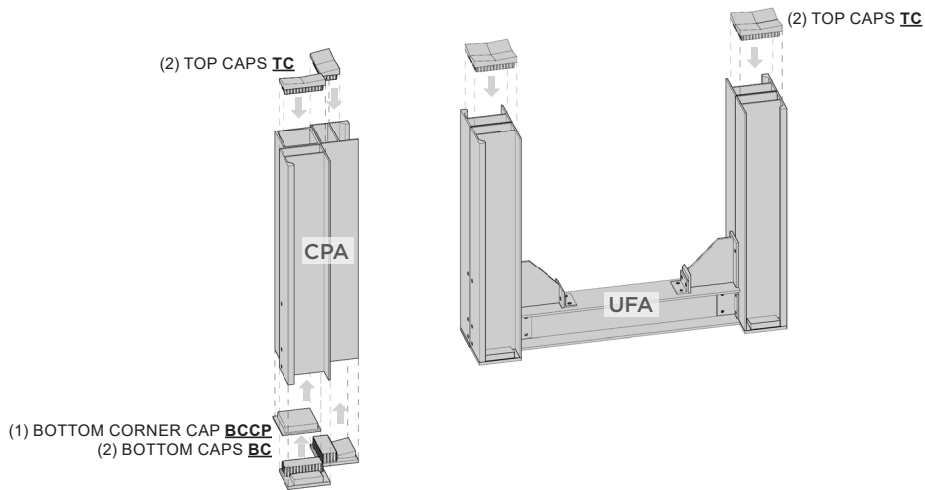
STEP 1.2.1

PLACE OPEN-GRADED DRAINAGE AGGREGATE UP TO INVERT ELEVATION OF UNDERDRAIN PIPE. VIBRATE AGGREGATE INTO PLACE WITH PLATE COMPACTOR OR OTHER VIBRATORY METHOD

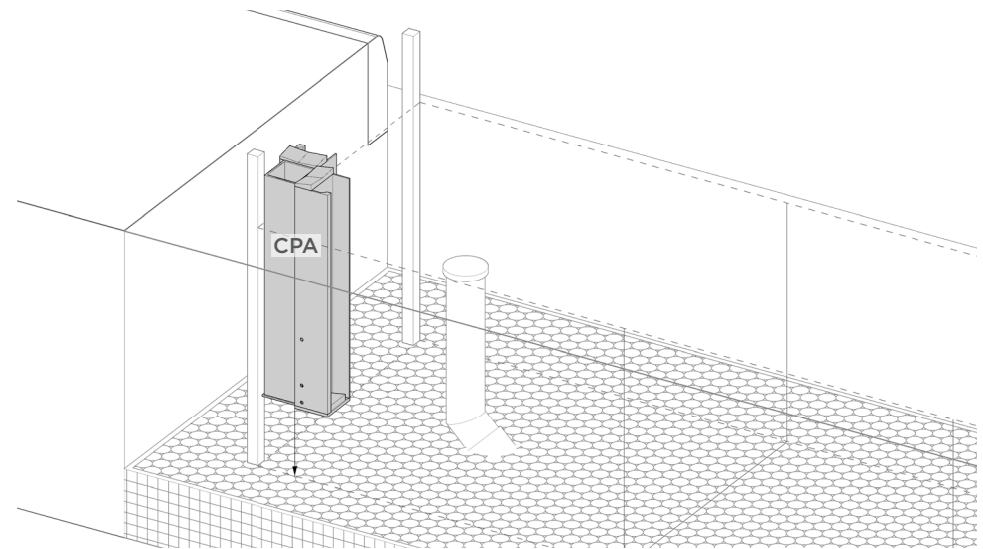
STEP 1.1

PLACE SINGLE LAYER OF BIAXIAL GEOGRID ON SURFACE OF SUBGRADE

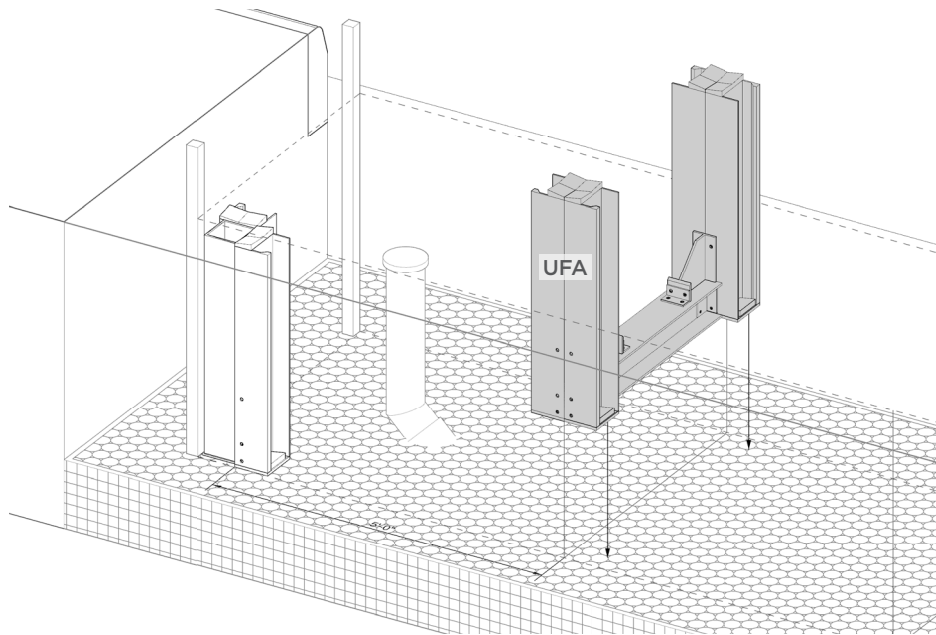




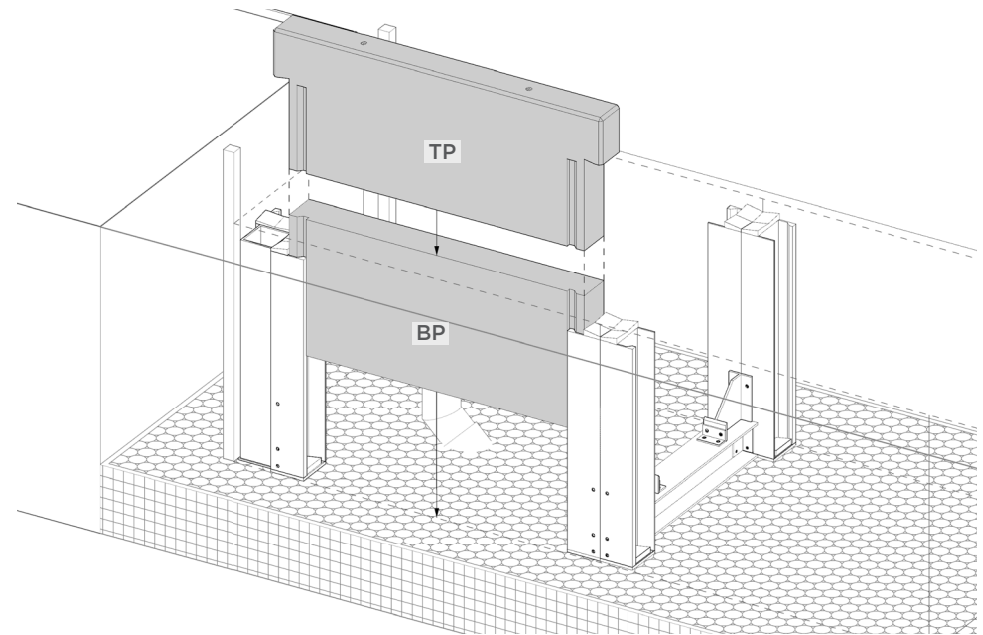
STEP 2.1
 INSERT CAPS INTO **UFA** AND **CPA**



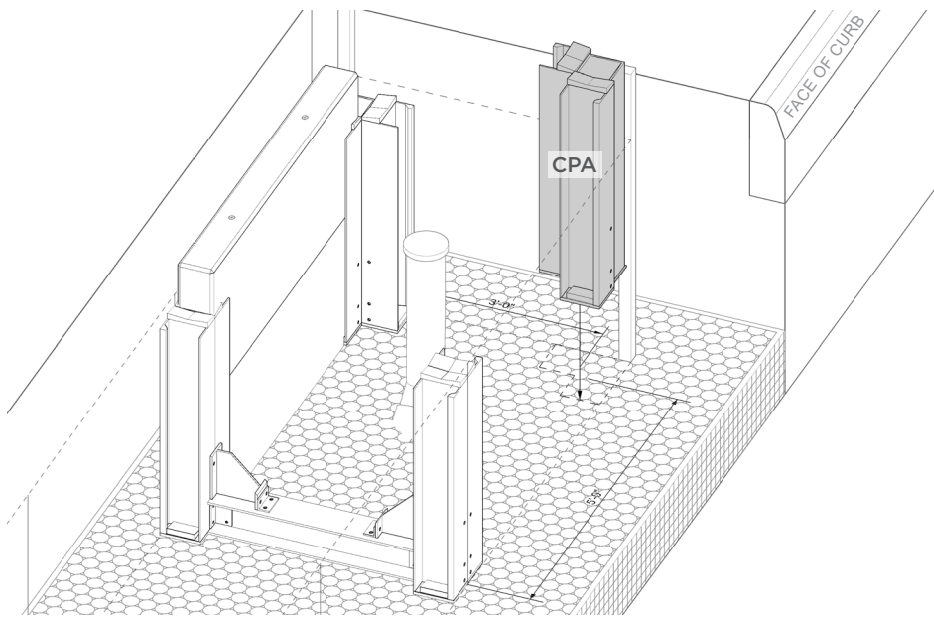
STEP 2.2
 SET **CPA** IN PLACE AT THE MARKED LOCATION



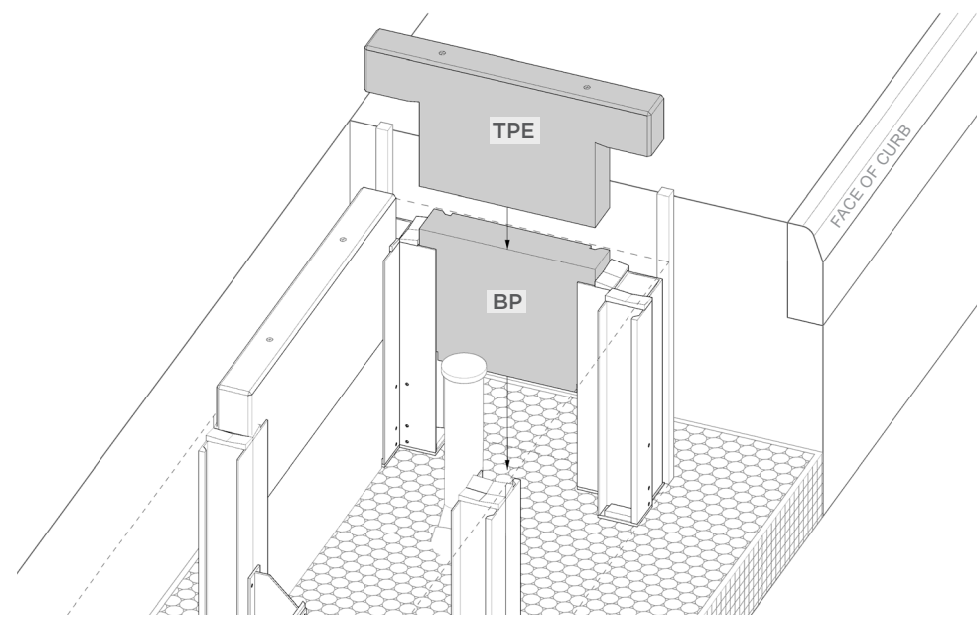
STEP 2.3
 SET **UFA** IN PLACE BASED ON THE STAKED LOCATION, AND CONFIRM THE GAP BETWEEN THE **UFA** AND **CPA**



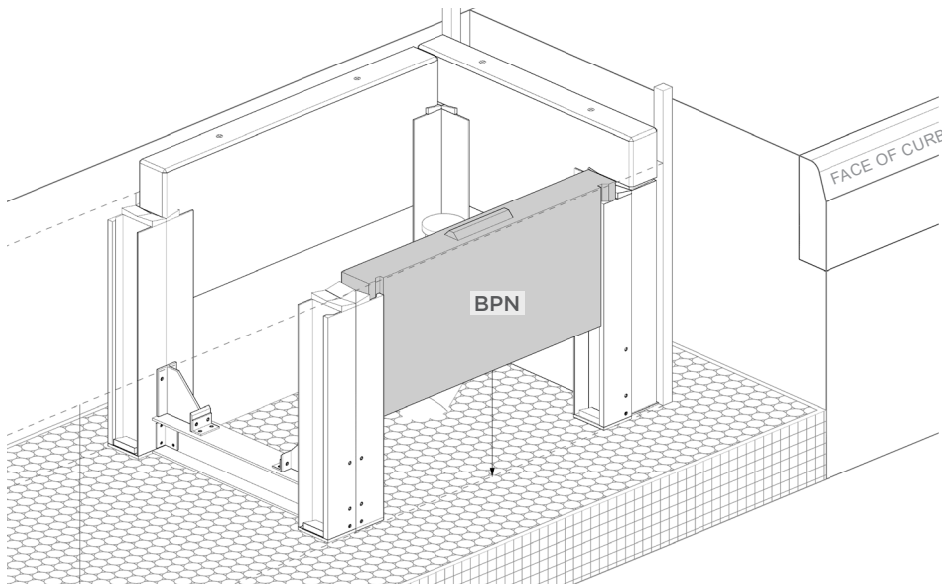
STEP 2.4
 INSTALL **BP** AND **TP** BETWEEN THE **UFA** AND **CPA**



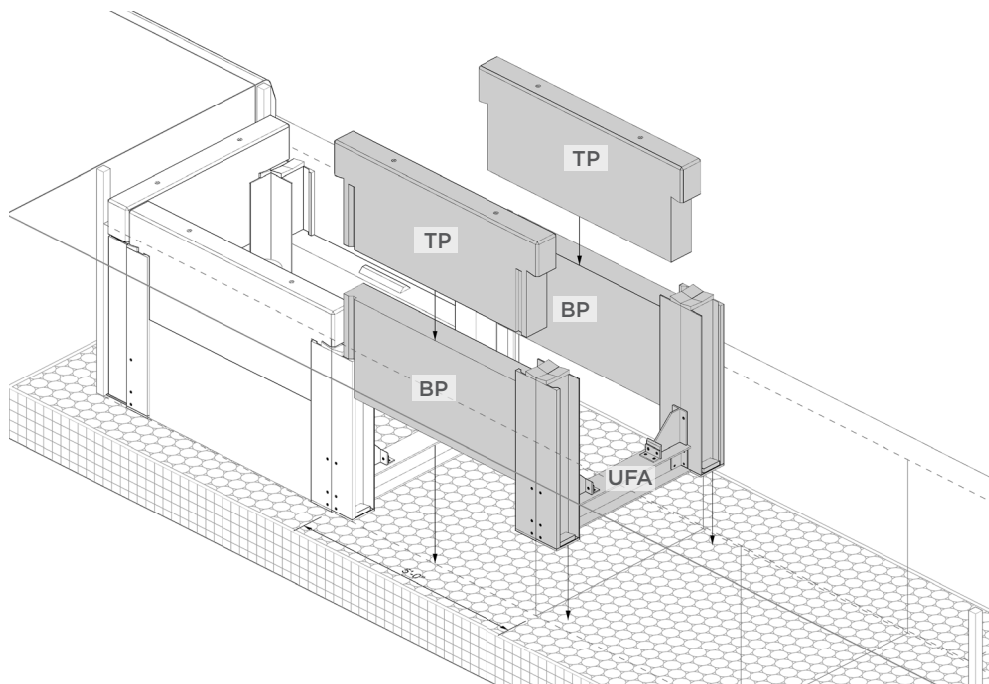
STEP 2.5
 SET **CPA** BASED ON THE STAKED LOCATION, AND CONFIRM THE DISTANCE TO THE FIRST **CPA** AND THE ADJACENT **UFA**



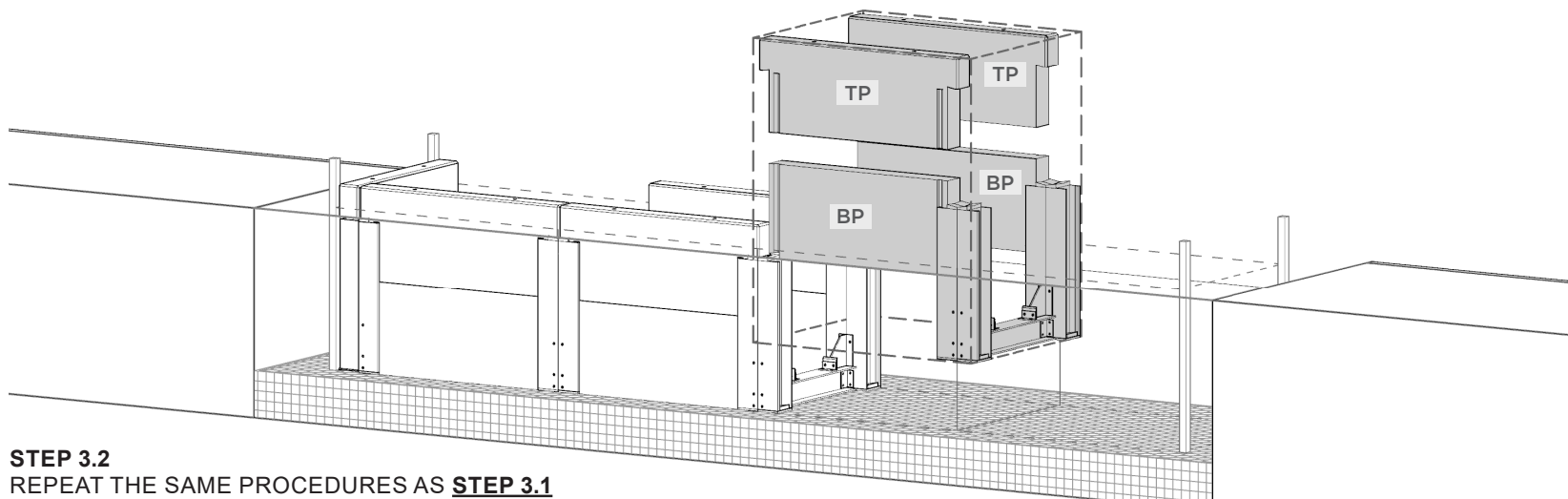
STEP 2.6
 INSTALL **BP** AND **TPE** BETWEEN THE TWO **CPA**



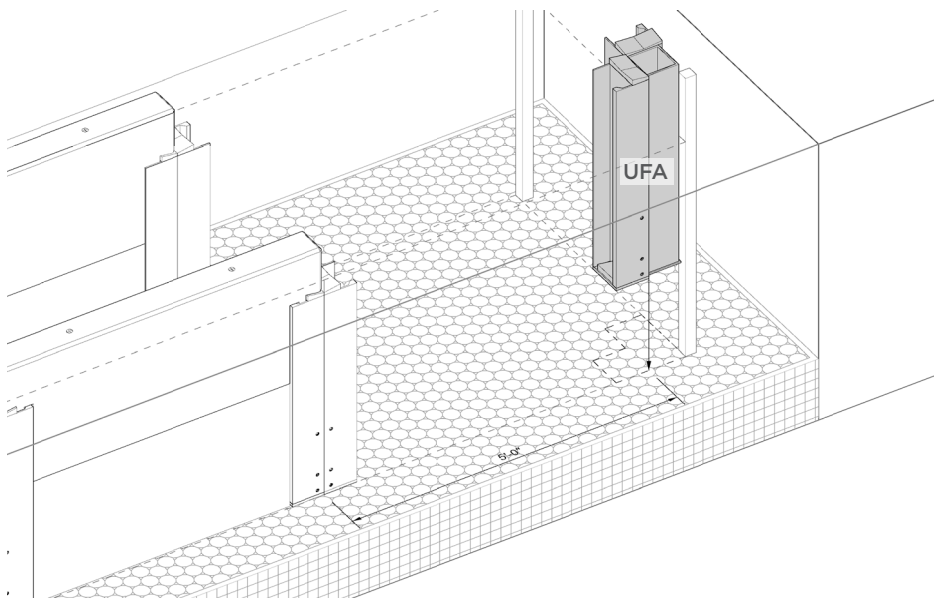
STEP 2.7
 INSTALL **BPN** BETWEEN THE **CPA** AND **UFA**



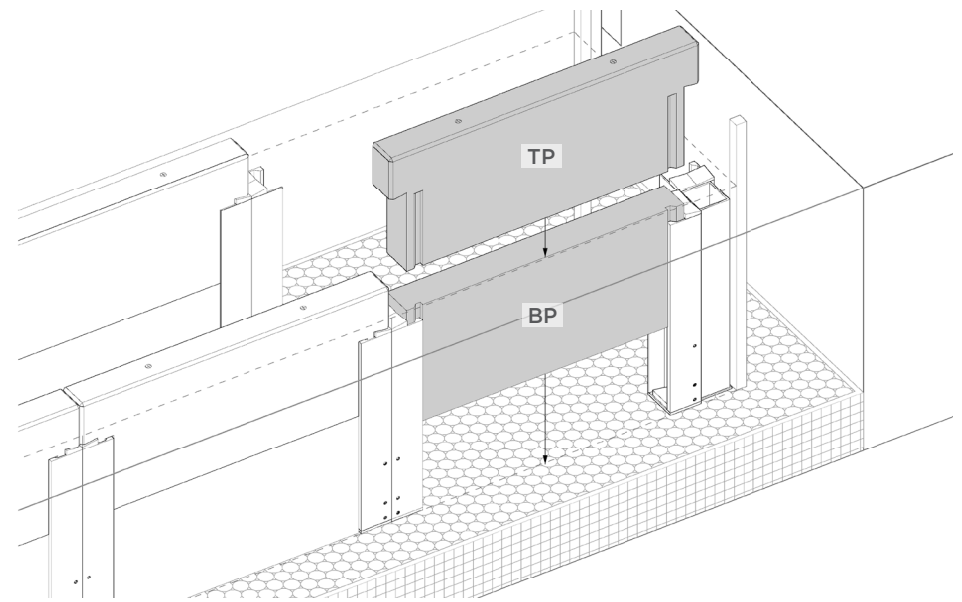
STEP 3.1
 SET **UFA** AT THE MARKED LOCATION, AND CONFIRM THE DISTANCE TO THE ADJACENT **UFA**. PLACE **BP** AND **TP** AT BOTH SIDES



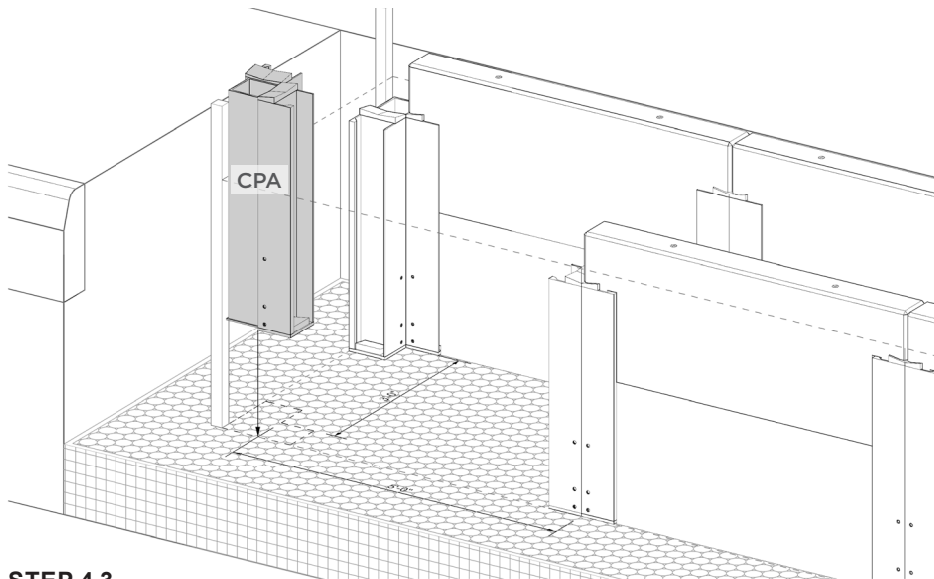
STEP 3.2
 REPEAT THE SAME PROCEDURES AS **STEP 3.1**



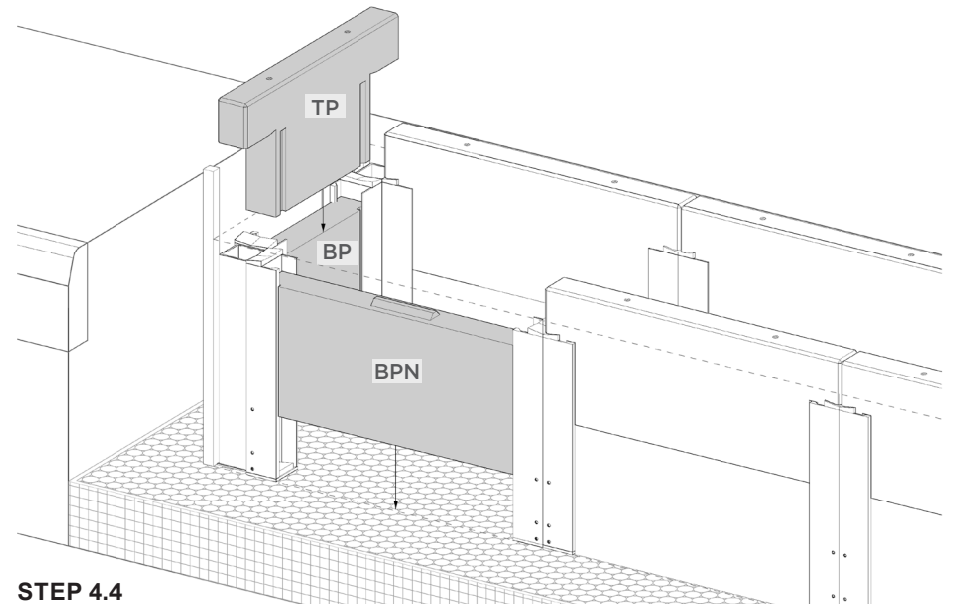
STEP 4.1
SET **CPA** IN PLACE BASED ON THE STAKED LOCATION, AND CONFIRM THE DISTANCE TO THE ADJACENT **UFA**



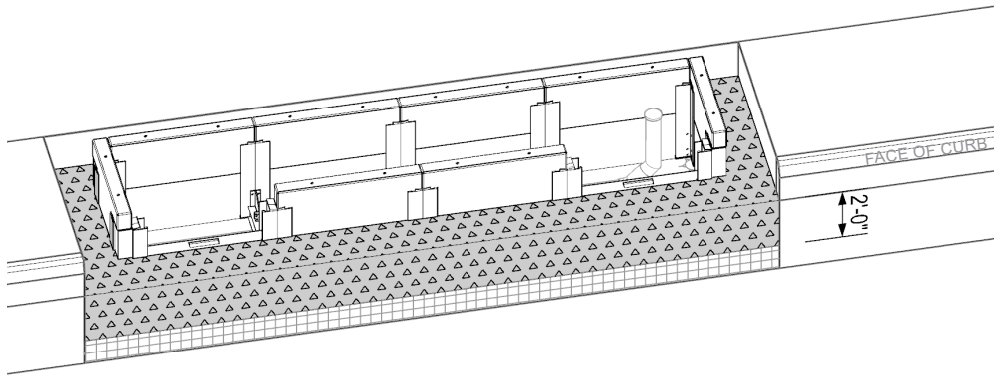
STEP 4.2
INSTALL **BP** AND **TP** BETWEEN THE **CPA** AND **UFA**



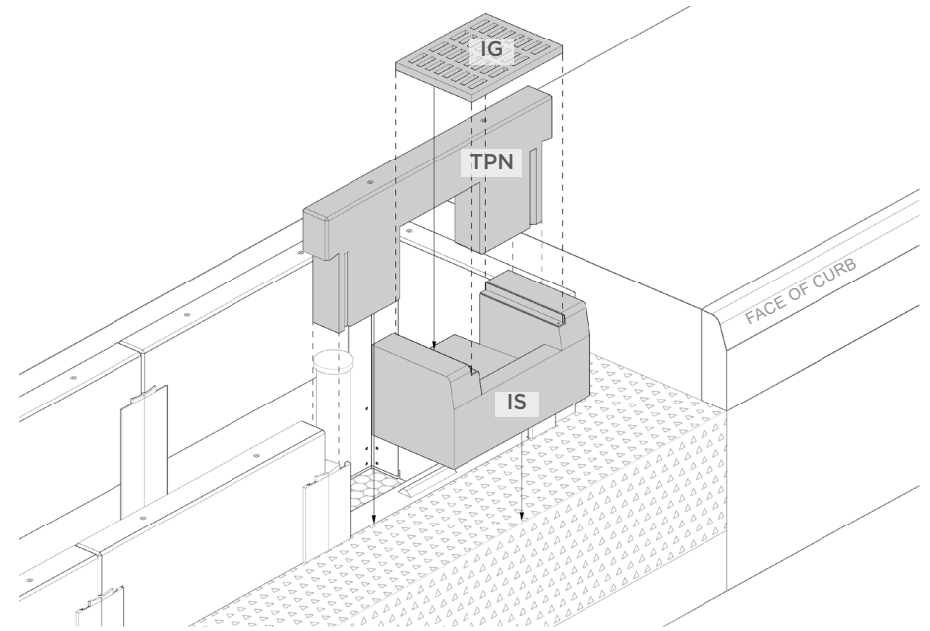
STEP 4.3
SET **CPA** IN PLACE BASED ON THE STAKED LOCATION, AND CONFIRM THE DISTANCE TO THE ADJACENT **CPA** AND **UFA**



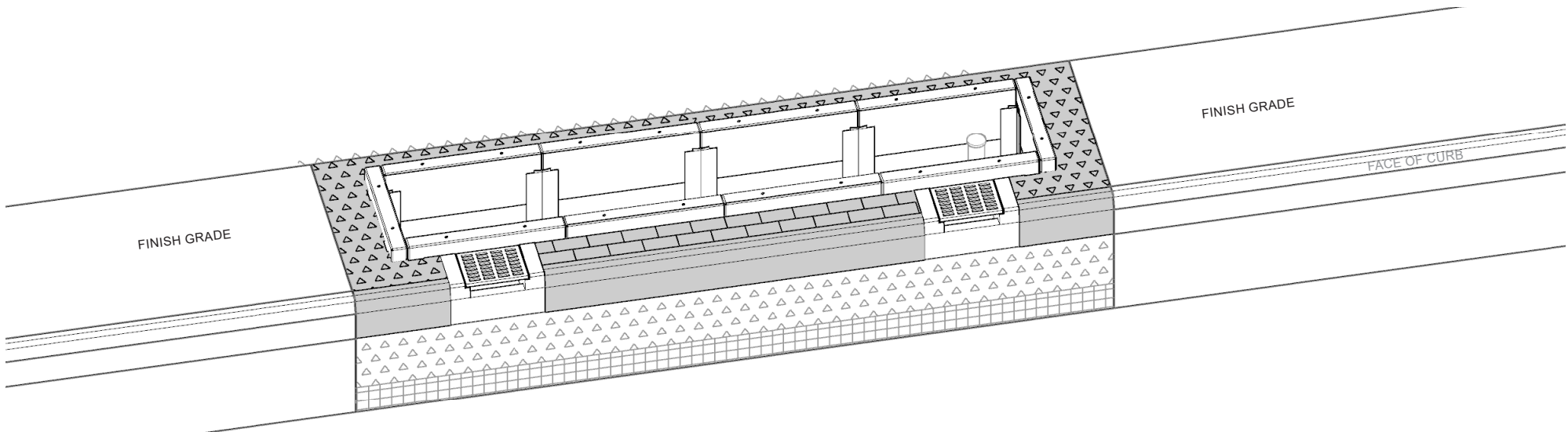
STEP 4.4
INSTALL **BP** AND **TP** AT THE END OF THE PLANTER, THEN INSTALL **BPN** BETWEEN **CPA** AND **UFA**



STEP 5.1
BACKFILL TO BE COMPACTED AND LEVEL WITH THE TOP OF THE BOTTOM PANELS



STEP 5.2
SET THE BOTTOM PIECE OF **IS** ON **BPN**, THEN INSTALL THE **TPN** AND **IG**



STEP 5.3
BACKFILL AND INSTALL PAVEMENT AND CURB ADJACENT TO PLANTER, TOP OF RAFT PANELS SHALL BE ± 6 INCH ABOVE FINISH GRADE