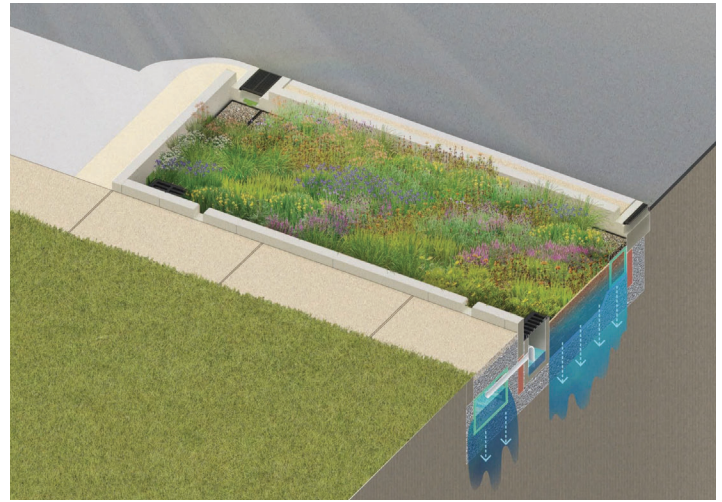
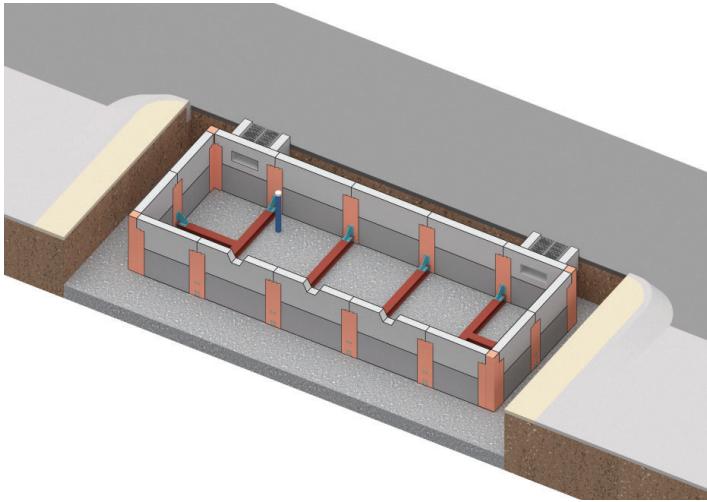




**infraSGA**  
www.infrasga.com

**RAFT Urban Bioretention System**  
Runoff **A**ttenuation & **F**iltration **T**echnology™



Left: The assembled RAFT kit of parts shown within an open excavation. Right: RAFT can be deployed as an infiltration solution and even linked with other products to expand capacity.

**RAFT is...**

A bioretention stormwater product solution that achieves practical and regulatory performance needs and requirements through a simplified, flexible, cost-effective, and easily maintainable system/solution. RAFT provides stormwater treatment and storage capacity, even in the most constrained environments.

**Features**

- Unitized system that provides uniformity and flexibility
- Components are sized to promote ease of handling/installation and units require smaller, less disruptive equipment to install than single-unit precast competitors
- Cost effective - lower cost than cast-in-place approaches
- Removable - allows for removal and re-installation as a result of damage or utility servicing
- Adaptable to a wide variety of conditions
- System can be lined or unlined for filtration and infiltration adaptability
- Achieves scalable stormwater storage and flood mitigation and fulfills regulatory requirements for water quality all in one system/solution

**Applications**

- |                          |                                 |
|--------------------------|---------------------------------|
| • Urban centers          | • Small/constrained sites       |
| • Campuses               | • Brownfields                   |
| • Streetscapes           | • Shallow water tables          |
| • Parking lots           | • Karst geologic conditions     |
| • Military installations | • Low infiltration soils        |
| • Airports               | • Aesthetically important areas |



**Grand Prize Winner - 2019**

U.S. Department of Housing and Urban Development (HUD) Coastal Communities Challenge and Resilience Innovation Fund. RISE partnered with MIT SOLVE to launch and fund businesses with innovative resilience solutions focusing on coastal flooding and stormwater management.

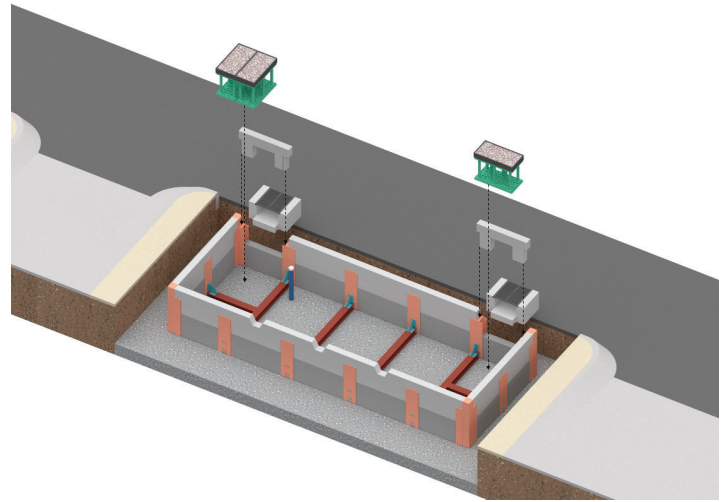
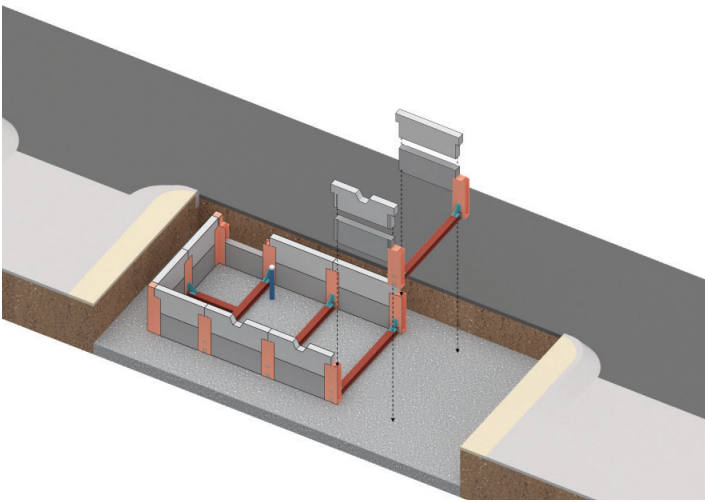


**RISE Challenge Winner - 2022**

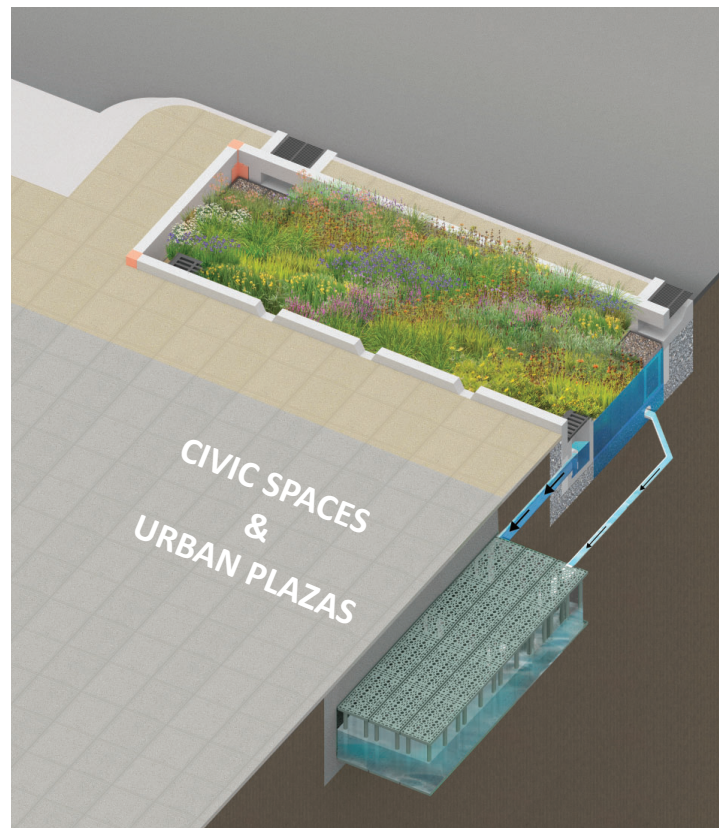
InfraSGA is a 2022 RISE Urban Coastal Community Resilience Challenge winner!



**infra SGA**  
www.infrasga.com



Example RAFT installation - complete assembly prior to backfill and planting.



The unitized aspect of RAFT makes it flexible and adaptable for a wide variety of contexts. The system is designed to be compatible with a variety of structural soil and underground storage systems in the marketplace to provide even more options to meet site-specific needs. The simple kit of parts makes installation straightforward, even for less experienced installers.